

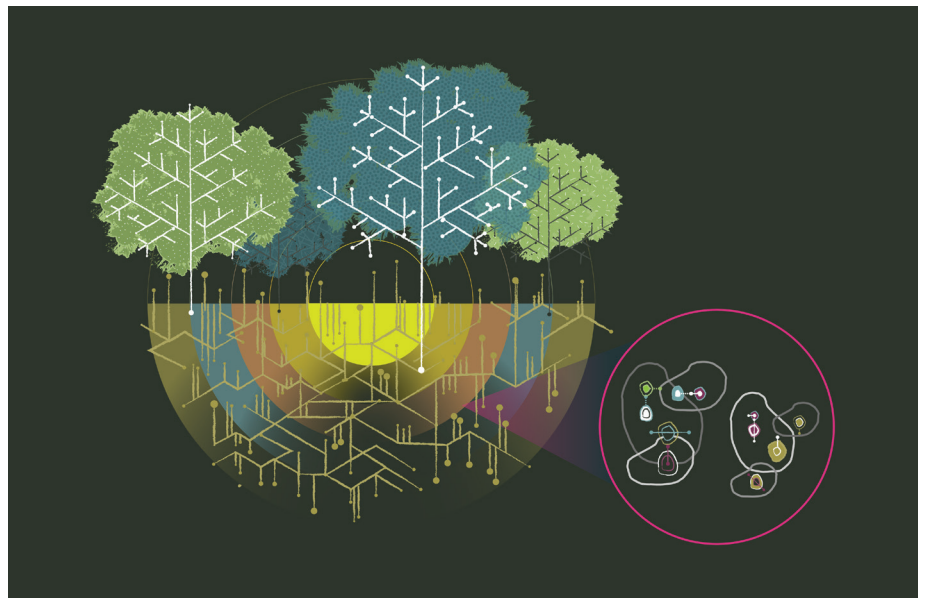


Join us in our mission to drive the green transition in cities. Find out how our Democratic Climate Model of strengthening governance, participation, and civil society can unlock climate resilience in cities, now and for future generations.

Democratic Society is leading change. We are highly networked, experienced facilitators, architects, and enablers at city leaders' service. Democratic Society works in partnership with cities to strengthen democracy rooted in local communities and local cultures. Why? Because we believe that **strengthened democracy will enhance climate action.**

Responding to the climate emergency demands different ways of thinking, doing, and collaborating for governments, people, industry, and civil society. For 18 months, Democratic Society has been working closely with leaders across 14 cities in the *EIT Climate-KIC Healthy, Clean Cities Deep Demonstrations* project to reach climate neutrality by 2030.

Here we present the first iteration of our Democratic Climate Model based on our project learnings. We invite your feedback.



Democratic Climate Model

Based on our rich experience with each Deep Demonstration city, Democratic Society has developed a replicable and scalable model for effective climate democracy.

The Model is illustrated through the tree analogy. While trees come from seeds, the seeds themselves do not contain the resources needed to grow them. Instead, the seeds sprout from the conditions around them, and the roots provide the tree with a sound footing to draw in nutrients, create stability, and grow towards the surface.

The nodes of connectivity between the roots broaden the possibilities of a nurtured and nourished canopy above. Just like the tree, climate resilience needs deep roots in communities that policies serve.

The Model features three parts: Rooted vs. Weak collaboration, The City Canopy, and an Actor Framework.

Rooted vs Weak collaboration

Rooted vs Weak collaboration visualises the degree to which strong or weak roots of collaboration unlock climate resilience in cities, now and for future generations.

'Rooted collaboration' shows the benefits of cultivating deep roots of community and citizen participation so that cities develop a dense, strengthened canopy for sustained climate futures.

Conversely 'Weak collaboration' is what happens without strong roots, where lack of citizen participation risks collapsing the city into a non-inclusive and non-sustainable climate future.

The City Canopy

The 'City Canopy' is a tool for mapping the scales of climate resilience developed through rooted collaboration. The denser the canopy covering a city, the more likely its structures and processes support rooted collaboration.

Canopy density is determined by the presence of four elements for climate resilience: Diversity of actors, Participatory culture, Subject matter expertise, and Resources.

Actor Framework

The Actor Framework (not pictured) helps us explain the types of actors involved in the Democratic Climate Model, what roles they play, and how their roles must evolve to bring about just and sustainable climate futures. Types of actors include artists, activists, researchers, grassroots groups, civil society, companies, governments, and journalists.

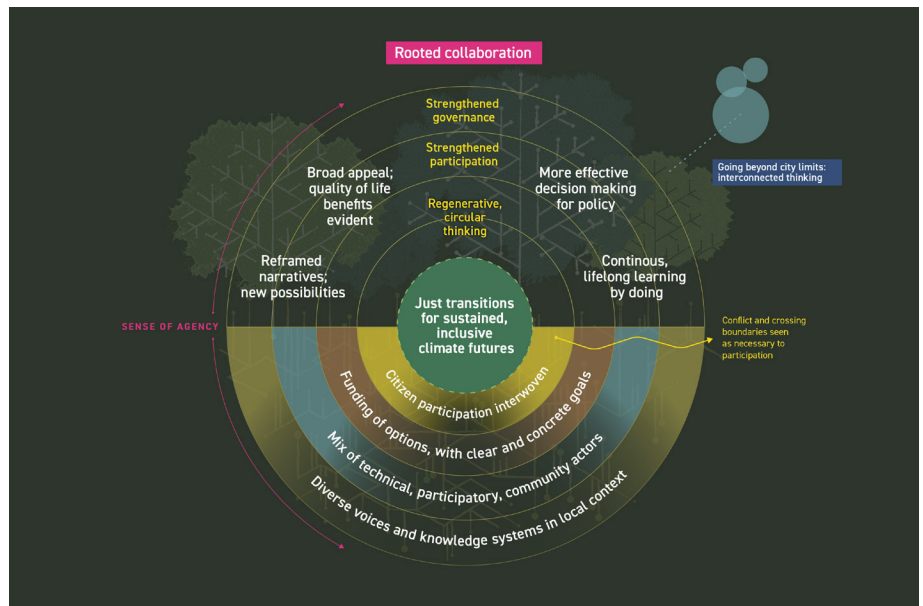


Fig. 1 Rooted collaboration

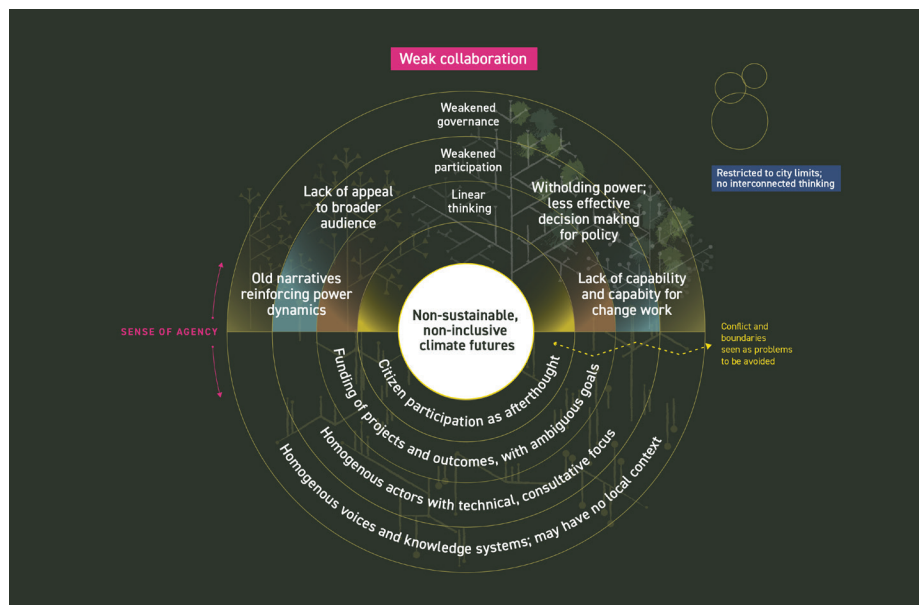


Fig. 2 Weak collaboration

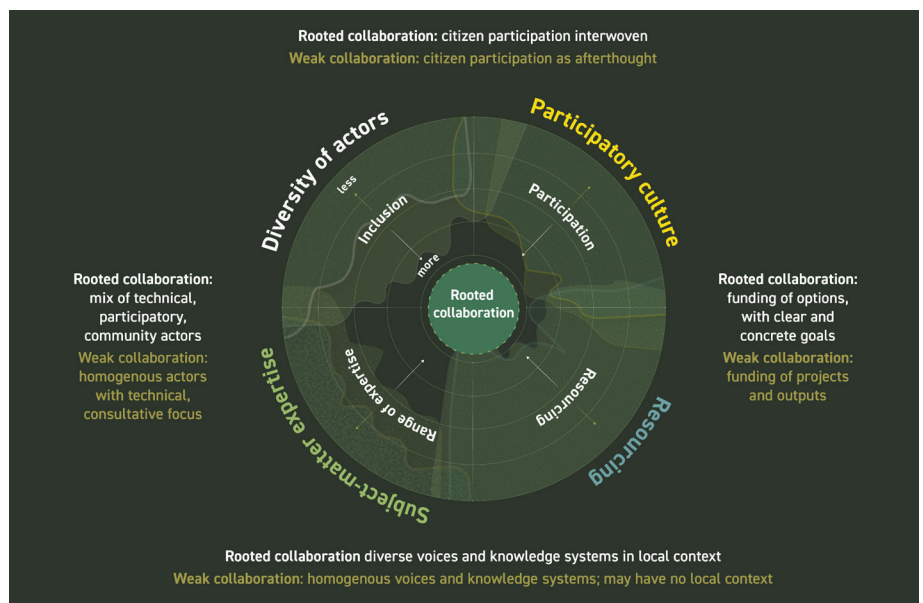


Fig. 3 The City Canopy



Democratic Society is the partner to unlock climate resilience

Strengthening governance, participation, and civil society can unlock climate resilience now and for future generations. Citizens feel agency through enhanced participation. Cities gain strength through enhanced democratic decision-making.

This is the Democratic Society experience. Allow us to share it with you.

Let's partner together for democracy and climate. Let's root democracy and climate action in our cities, regions, towns, and villages across Europe.

If you want to know more, get in touch with Nadja Nickel, Programme Director, Climate.

Nadja@demsoc.org
www.demsoc.org

Why is Democratic Society work so important?

We bridge a public consent gap. Cities are taking steps to address climate change, but too many are hampered by low public engagement levels, resulting in division and risky decisions. Yet public consent must be actively sought because people's lives will be directly and dramatically affected.

We bridge a public participation gap. The potential and possibilities for people to contribute to effective decision-making are under threat at a time when public participation is needed more than ever. Citizens will have to adjust to new climate laws, but the cities will have to lead the social, economic, and ecological transition.

We bridge an engagement gap. City leaders are starting to reimagine city life and reflect on how to reverse chronic congestion, polluting buildings, and shrinking green spaces. Cities consume the majority of natural resources and produce the majority of waste and carbon emissions, so they have no choice but to show climate action evidence. Yet citizens and communities are not fully engaged in city decisions, not connecting their declining quality of life with the climate challenge.

We believe in city leaders as climate leaders. We have seen that cities embracing rooted collaboration have strong potential to become climate-resilient cities. City leaders value our service as facilitators, architects, and enablers to help drive their green and just transition through the Democratic Climate Model.

Democratic Society contributes to Agenda 2030

Deeper climate engagement in 14 cities today, 100 tomorrow, and potentially 1000s in the future, building a broader network of resilient cities.

Broader climate ambition among citizens with the tools to fully participate in complex city decisions, share power, and drive the public interest to shape the cities of tomorrow.

Many more cities and regions that are liveable, where citizens live their best lives within vibrant, inclusive, socially just communities, rooted in the lasting benefits of the transition.